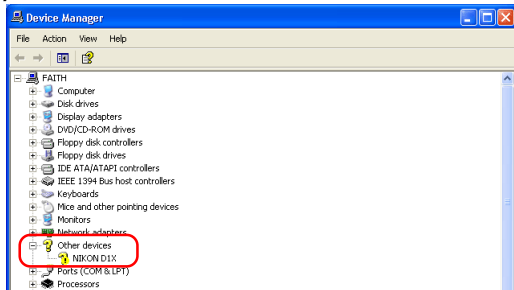


Reinstalling the Device Drivers (DI/DIx/DIH) - Windows XP (Home Edition/Professional) -

If NIKON DIX (DI/DIH) appears under “Other Devices” reinstall the device drivers as instructed below.

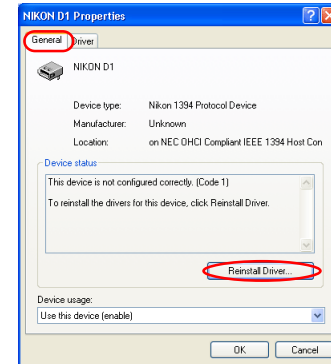
Step 1

Open the Device Manager dialog. Double-click the listing for the NIKON DIX (DI/DIH) that appears under “Other devices”; the Properties dialog will be displayed.



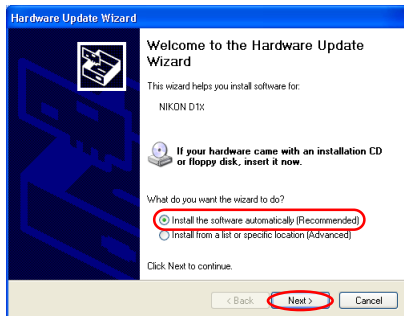
Step 2

Open the General tab and click **Reinstall Driver...**



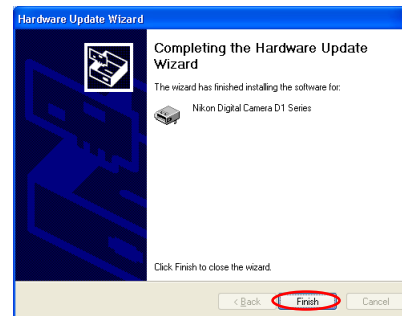
Step 3

The “Hardware Update Wizard” dialog will appear. Holding down the shift key to prevent the Welcome dialog from opening automatically, insert the Nikon View 5 CD into the CD-ROM drive. (If the shift key is not held down, the Welcome dialog will appear when the CD-ROM is inserted.) Select “Install the software automatically”, and click **Next**.



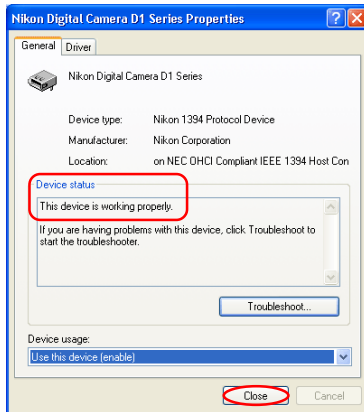
Step 4

When the driver installation has been completed, the dialog shown below will be displayed; click **Finish** to close the wizard.



Step 5

Confirm that “This device is working properly” appears under “Device status” in the General Tab of the Nikon Digital Camera D1 Series Properties dialog. Click **Close**.



Step 6

Close the Device Manager, then click **OK** to close the System Properties window.

